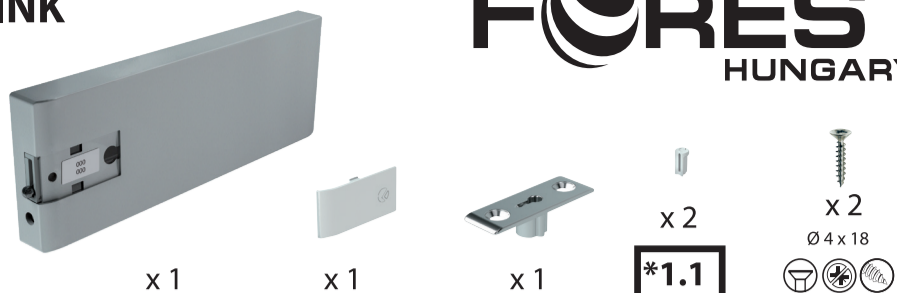




1



Foglio 257



www.italianaferramenta.com

→ CATALOGUE → HINGES → KIMANA



www.ferramentalivenza.it

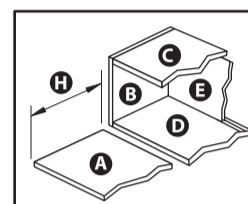
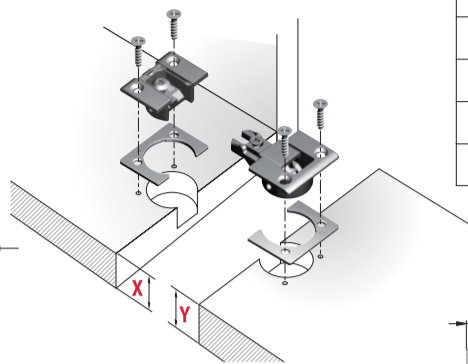
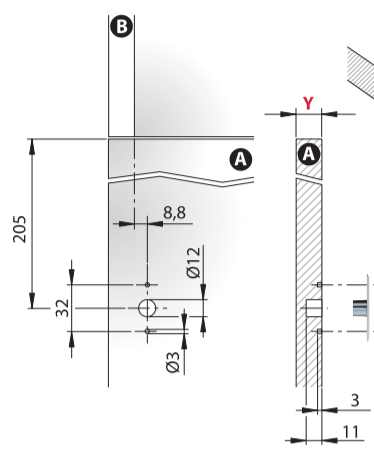
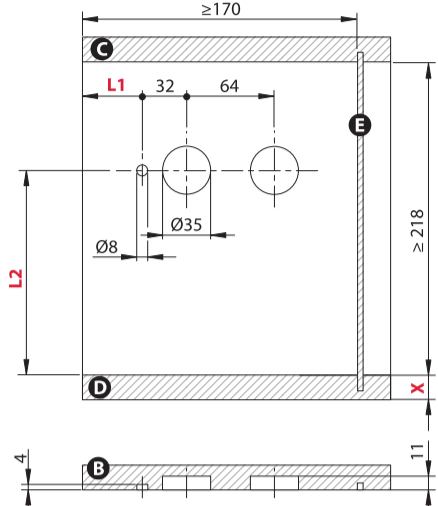
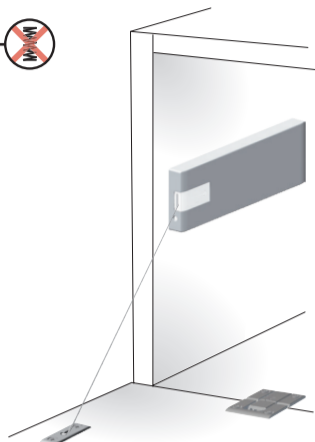
→ CATALOGO → CERNIERE E ASTE → KIMANA

| X+ | Y+ | L1 | L2 |
|--------|--------|----|-----|
| 16 + 4 | 16 + 2 | 43 | 190 |
| 16 + 4 | 19 | 44 | 190 |
| 18 + 2 | 18 | 44 | 189 |
| 18 + 2 | 19 | 44 | 189 |
| 19 | 16 + 2 | 42 | 187 |
| 19 | 19 | 43 | 187 |
| 20 | 20 | 43 | 187 |

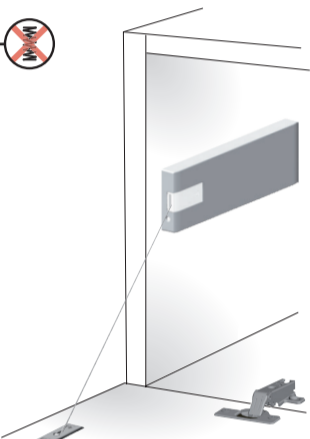
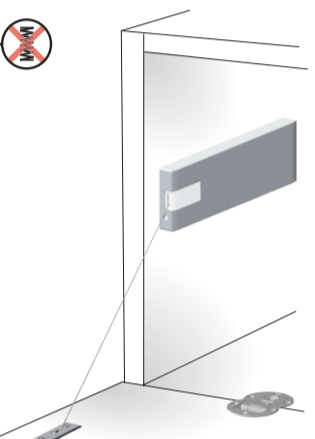
2 A

*2A.1

Schemi di foratura validi solo per utilizzo con cerniera Kimana.



2 B



*2B.1

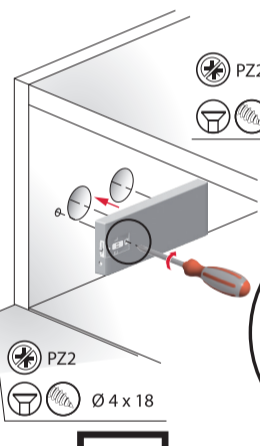
3

*3.1

*3.2

PZ2

Ø 3,5 x 16

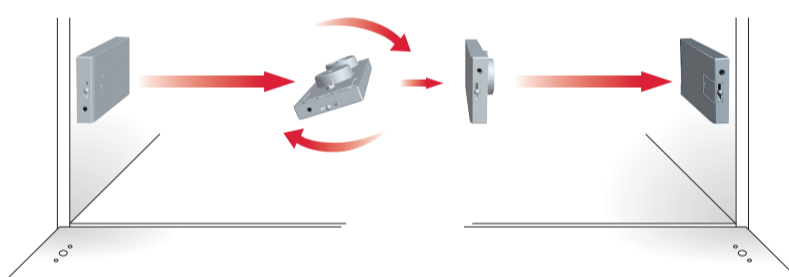


PZ2

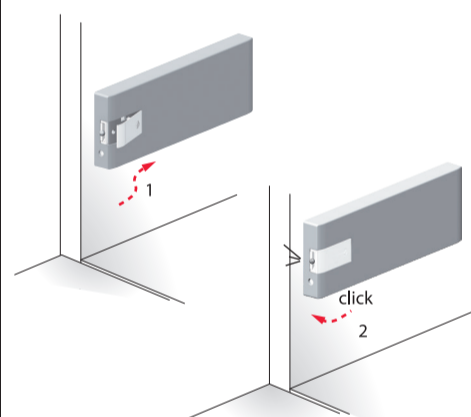
Ø 4 x 18

*3.3

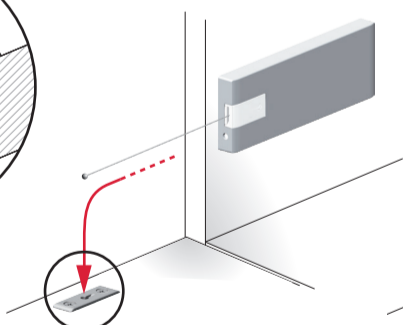
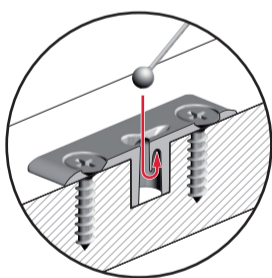
*3.4



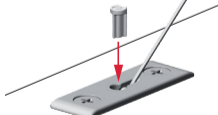
4



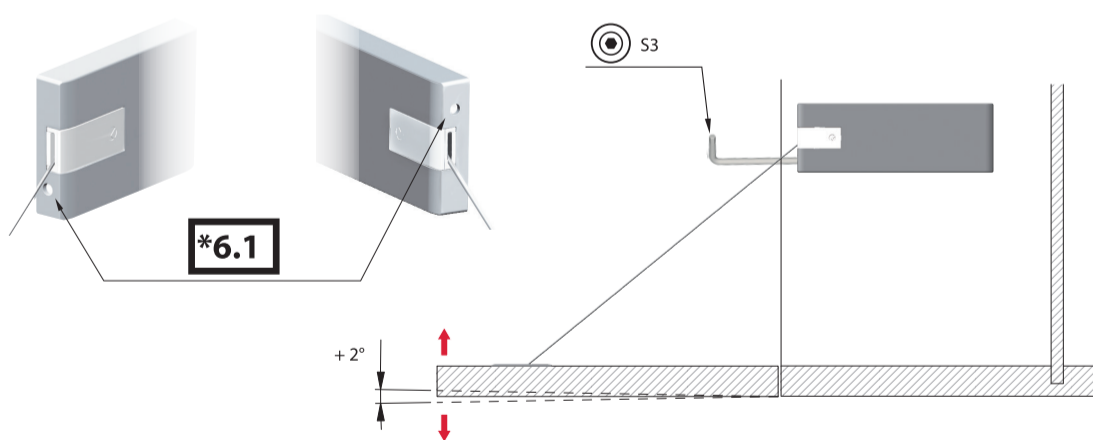
5



*5.1



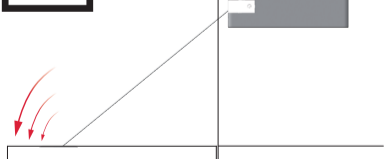
6



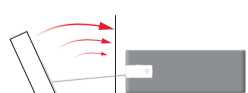
*6.1

7

*7.1

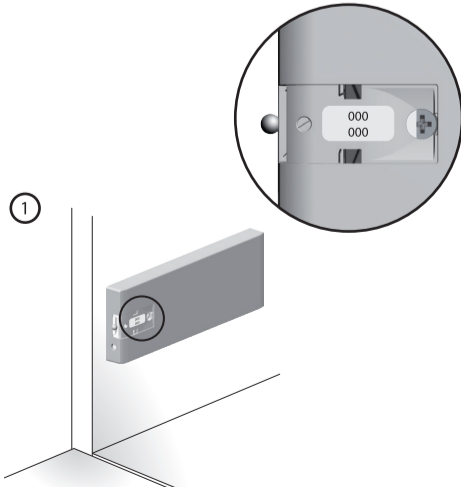


*7.2

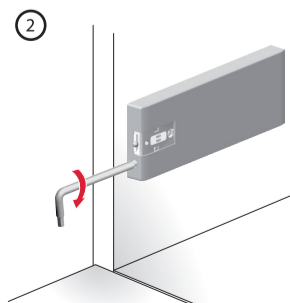


*7.3

8



*8.1



*8.2

